



PROJECT UPDATE

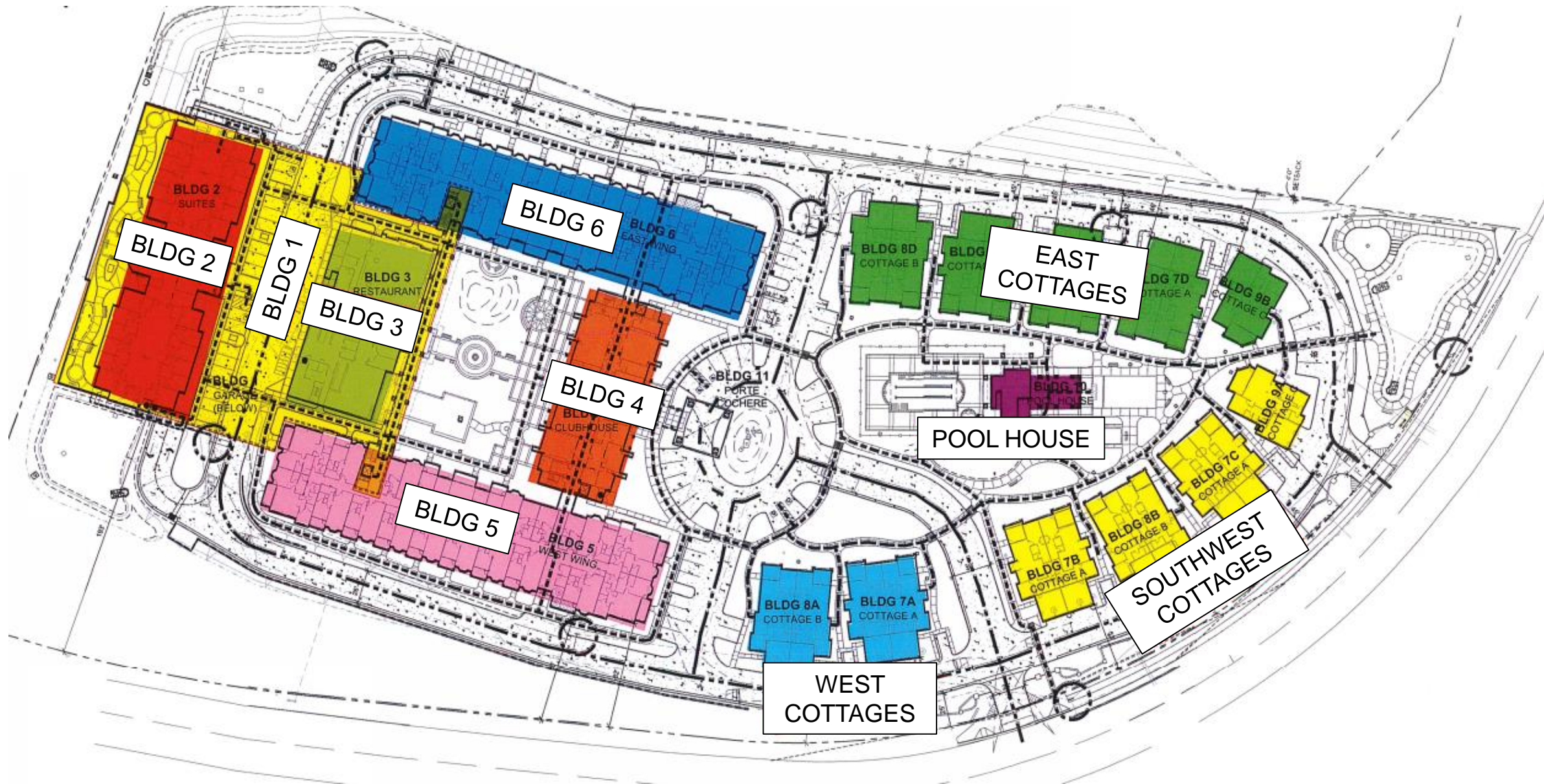
Silvergate Rancho Bernardo
San Diego, CA

September 2019



TABLE OF CONTENTS

- Site Map
- Safety Hours
- Current Highlights
- Project Photos
- 360 Photos
- Upcoming Highlights
- Ryan Companies Contact Information



237,800

SAFETY HOURS
TO DATE

Current Highlights

- Memory Care (Building 2)
 - Flooring, tile, counter, and door install in progress
 - 1st coat of paint complete
 - MEP finish trim in progress
 - Exterior Stucco in progress
- Restaurant & Colonnade (Building 3)
 - Interior drywall in progress
 - Roofing complete
 - Ceiling soffit framing in progress
 - Continue MEP rough-in
- Clubhouse (Building 4)
 - Interior drywall in progress L3
 - Soffit framing in progress at L1 and L2
 - MEP rough in nearing completion
- West Apartments (Building 5)
 - MEP rough in nearing completion
 - Soffit framing in progress
 - Production taping in progress
 - Exterior Lath in progress
- East Apartments (Building 6)
 - Exterior stucco in progress
 - Priming L1 in progress
- Cottages (Buildings 7A-E; 8A-D; 9A,B)
 - “Model” cottage turned over to owner
 - Sidewalk concrete in progress
 - Cabinet, Appliance, and MEP trim in progress
 - Owner Punch Walk Upcoming
- Porte Cochere & Walkway
 - Exterior Sheathing in progress
 - Electrical, Fire Protection rough-in complete
- Pool House (Building 10)
 - MEP finish trim ongoing
 - Courtyard Concrete ongoing
- Sitework
 - Curbs poured on south side of site
 - Road grading continues site wide

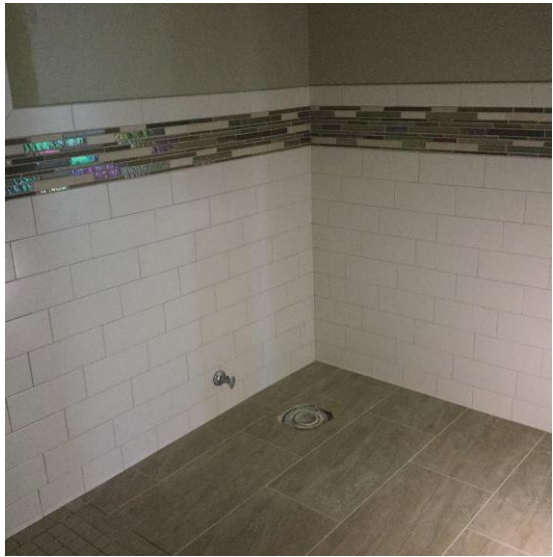
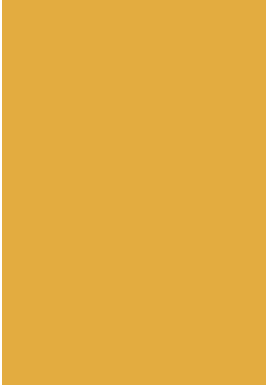
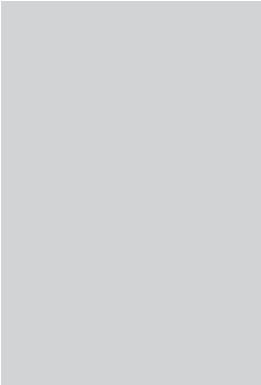
PROJECT PHOTOS

September 2019





MEMORY CARE





B3 soffit framing and insulation in progress



B3 Dining Area MEP Rough in progress



B6 exterior lath

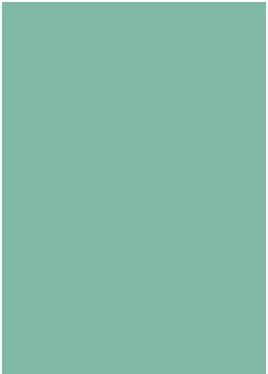


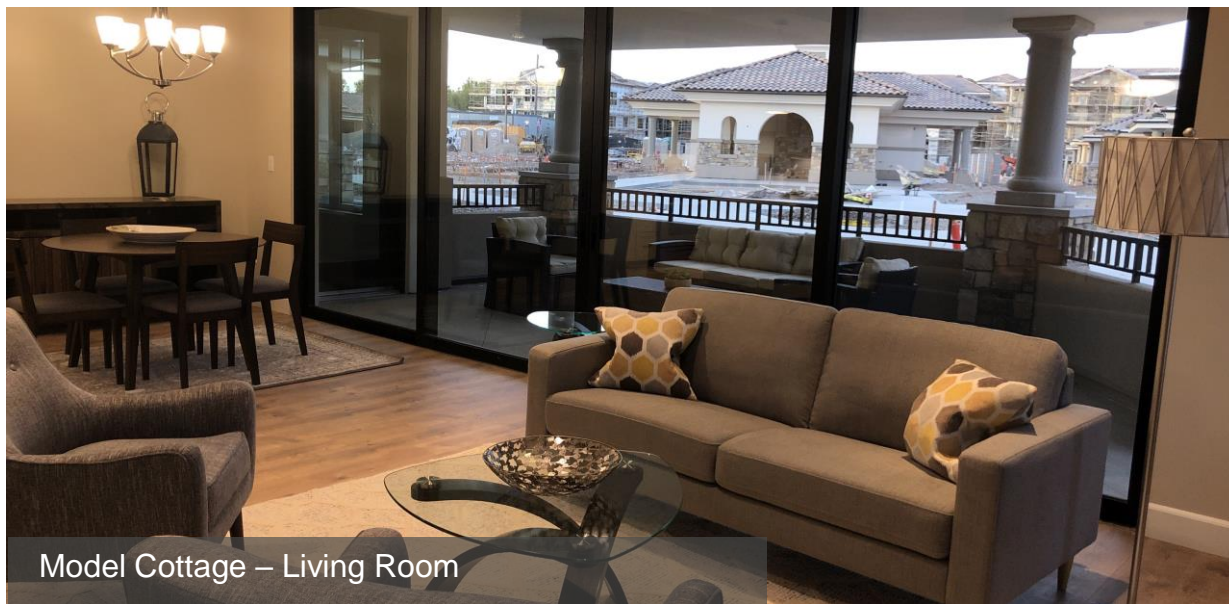
B6 exterior stucco – Brown Coat

EAST APARTMENTS

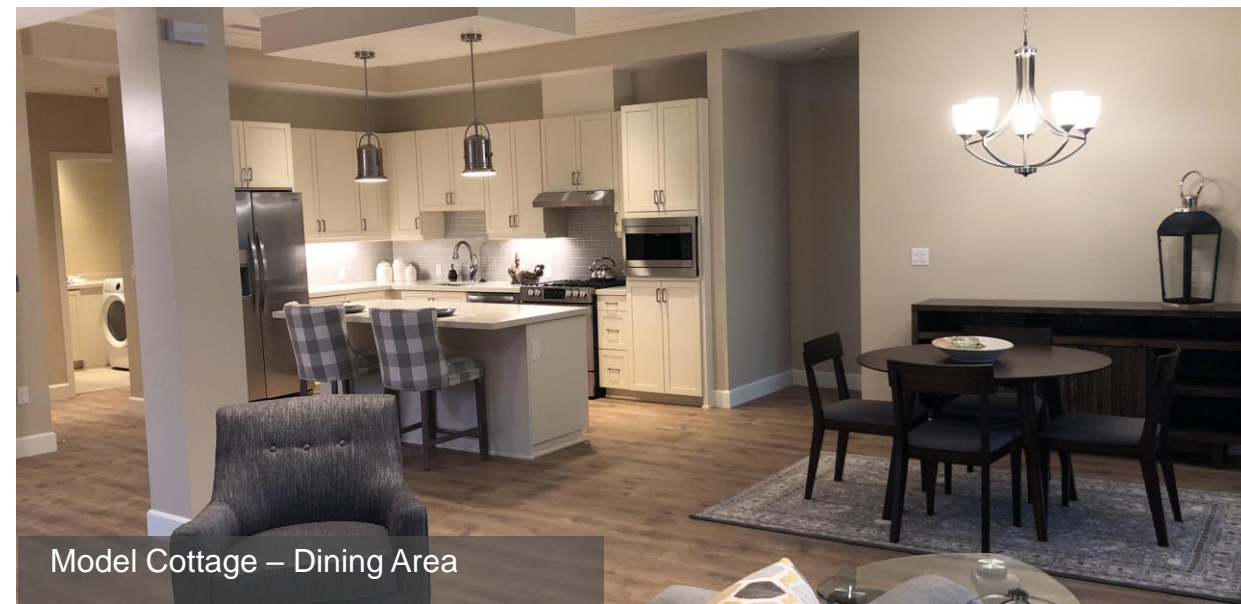


WEST APARTMENTS





Model Cottage – Living Room



Model Cottage – Dining Area



Model Cottage - Kitchen



Model Cottage – Laundry Room



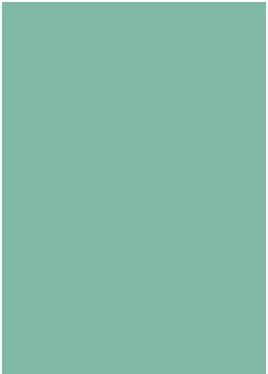
Site Export in Progress



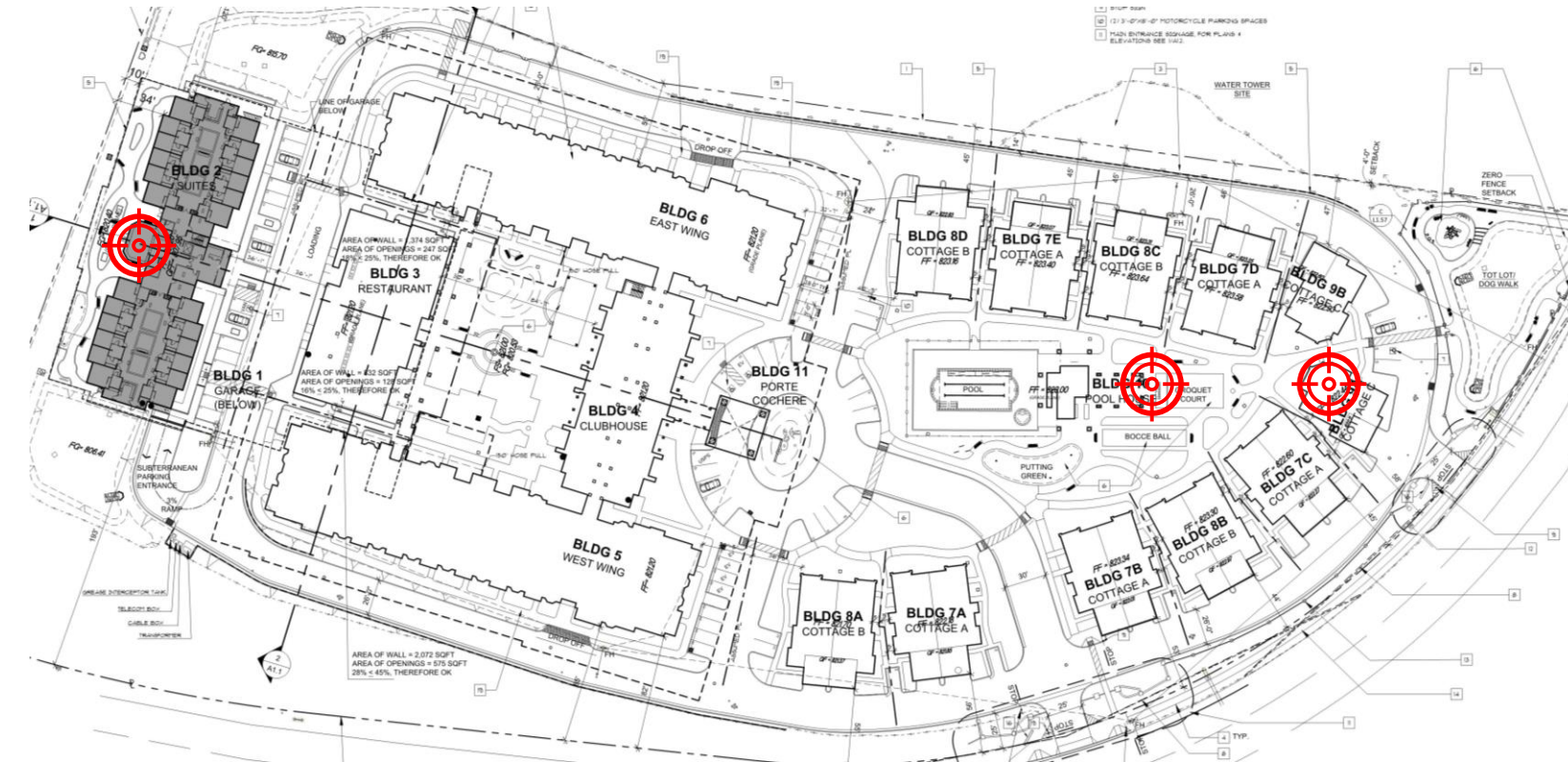
Cottage Sidewalk pour in progress



POOL HOUSE



360 PHOTOS



Click on the targets to view 360 degree images of the site.

The link will take you to your web browser to view the photo.

Then use your cursor to pan around the photo in any direction you like.

Click on the targets to view 360 degree images of the site.

The link will take you to your web browser to view the photo.

Then use your cursor to pan around the photo in any direction you like.

Click on the targets to view 360 degree images of the site.

The link will take you to your web browser to view the photo.

Then use your cursor to pan around the photo in any direction you like.

Upcoming Highlights

- Memory Care (Building 2)
 - Finish exterior stucco
 - Storefront glazing installation
 - Interior Finish Completion
- Restaurant & Colonnade (Building 3)
 - Exterior skin lathing
 - Additional structural framing at entry
 - Restaurant equipment MEP rough
- Clubhouse (Building 4)
 - Continue interior framing & MEP rough on all levels
 - L3 drywall and taping
 - Porte Cochere and Walkway stucco
- West Apartments (Building 5)
 - Ceiling Drywall
 - Complete drywall installation & MEP Rough
 - Begin painting
- East Apartments (Building 6)
 - Complete exterior stucco
 - Paint all levels (1st coat)
 - Interior door/trim install begins
 - Tile Install begins
 - Cabinetry install begins
- Cottages (Buildings 7A-E; 8A-D; 9A,B)
 - Exterior light fixture installation
 - Interior Finish Completion
 - Owner Punch Walk
- Porte Cochere & Walkway
 - Start electrical & fire installation
 - Install precast columns
- Pool House (Building 10)
 - Millwork and counter installation
 - TP&A installation
 - MEP finish trim
- Sitework
 - Continue curb, gutter, and sidewalk
 - Base layer paving

Contact Information

Hans Muecke

Senior VP Operations, Western US

(p) 858-812-7964

(c) 630-606-2503

Hans.Muecke@ryancompanies.com

Michael Beadle

Director, Construction

(p) 858-812-7926

(c) 612-239-5547

Michael.Beadle@ryancompanies.com

Niels Zwinkels

Field Coordinator, Western US

(p) 858-812-7910

(c) 760-815-0615

Niels.Zwinkels@ryancompanies.com

Keith Pitts

Project Executive, Construction

(p) 858-812-7970

(c) 619-385-9587

Keith.Pitts@ryancompanies.com

Travis Urig

Project Manager

(p) 858-812-7920

(c) 602-329-2044

Travis.Urig@ryancompanies.com

Cody Vander Veen

Project Manager

(p) 858-812-7953

(c) 612-400-5121

Cody.VanderVeen@ryancompanies.com

Jerame Carlson

Senior Project Engineer

(p) 858-812-7951

(c) 641-231-1208

Jerame.Carlson@ryancompanies.com

Katerina Grengs

Virtual Design Coordinator

(p) 612-492-4713

(c) 651-472-1915

Katerina.Grengs@ryancompanies.com

Nick Cap

Superintendent

(c) 602-513-3235

Nick.Cap@ryancompanies.com

Paul Stykel

Superintendent

(c) 619-385-1115

Paul.Stykel@ryancompanies.com

Ed Souza

Superintendent

(c) 858-245-4874

Ed.Souza@ryancompanies.com

Tommy Sewell

Assistant Superintendent

(c) 619-380-1203

Tommy.Sewell@ryancompanies.com

Heather Sullivan

Project Coordinator

(p) 858-812-7963

Heather.Sullivan@ryancompanies.com

Taylor Barton

Project Engineer

(p) 607-425-0101

Taylor.Barton@ryancompanies.com