



PROJECT UPDATE

Silvergate Rancho Bernardo

San Diego, CA

March 2019

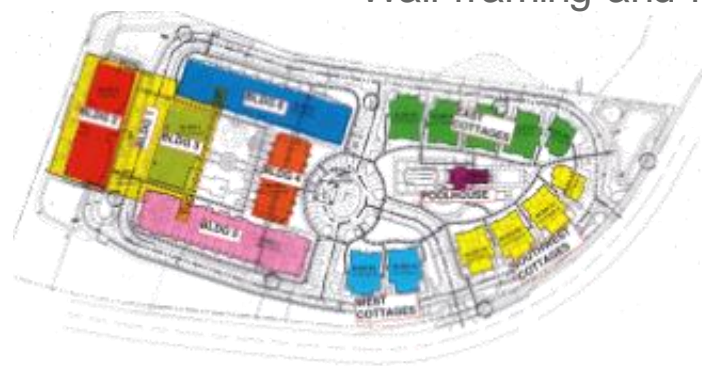
TABLE OF CONTENTS

- Current Highlights
- Safe Hours
- Fun Fact
- Project Photos
- Upcoming Highlights
- Ryan Companies Contact Information



CURRENT HIGHLIGHTS

- **Memory Care (Building 2)**
 - Final prep for roofing activities
 - L1 framing inspections complete
 - Window installation
- **Restaurant (Building 3)**
 - Structural steel start
- **Clubhouse (Building 4)**
 - L2 deck pour complete
- **West Apartments (Building 5)**
 - L1 interior framing and MEP rough-in
 - L2 wall panels complete
 - L3 metal deck complete
- **East Apartments (Building 6)**
 - L1 and L2 MEP rough-in
 - L3 wall panels and roof structure complete
- **E Cottages (7D, 7E, 8C, 8D, 9B)**
 - Production drywall start
 - MEP rough-in complete
 - Lath start
- **SW Cottages (7B, 7C, 8B, 9A)**
 - Roofing tile in progress
 - MEP rough-in combo inspections
- **W Cottages (7A, 8A)**
 - Roof sheathing complete
 - MEP rough-in in progress
- **Pool house (Building 10)**
 - Wall framing and roof trusses in progress





111,151

SAFETY HOURS TO DATE



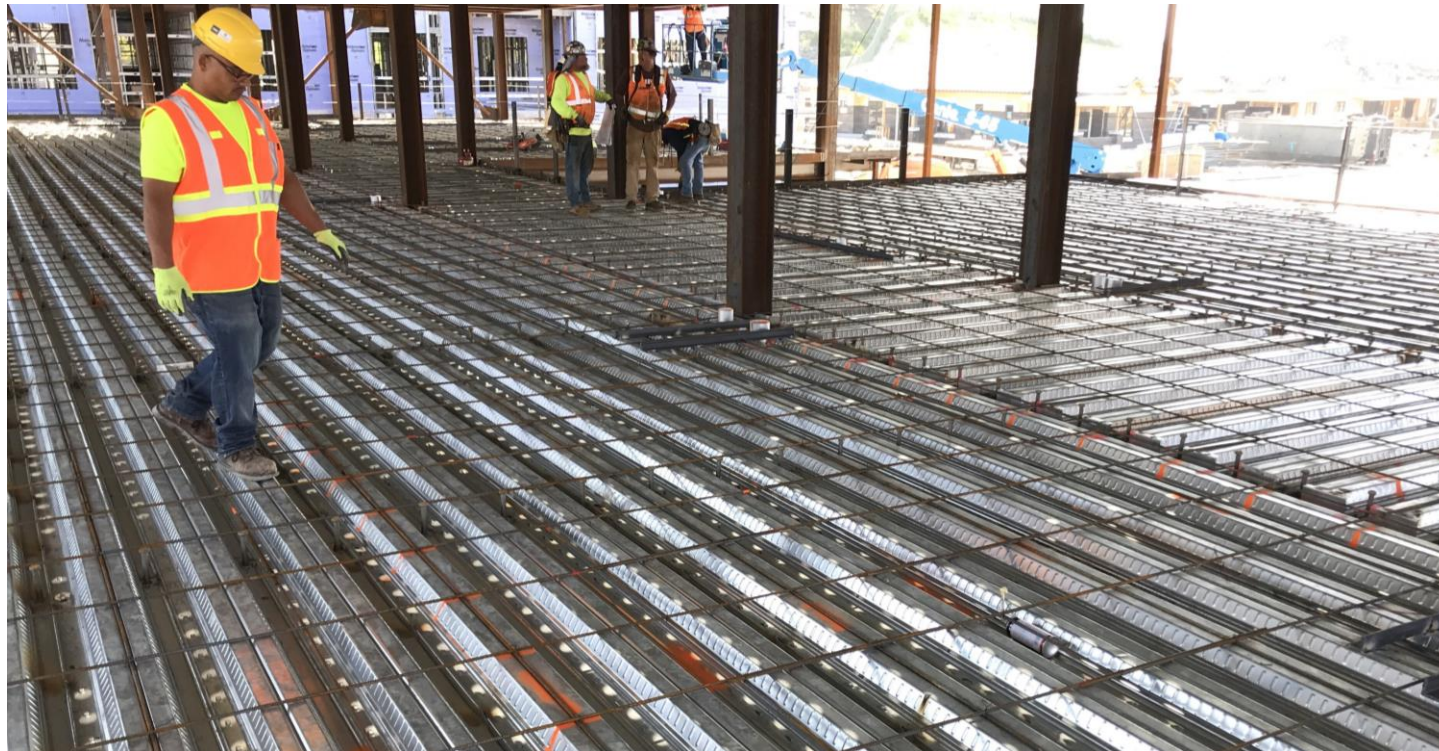
Fun Fact

To date **12,134 cubic yards** of concrete have been poured.

This is equivalent to:

- 45,866,520 pounds... or **262,094 people**.
- **62 miles** of sidewalk, which would get us from Rancho Bernardo to Palm Springs, as the crow flies.

PROJECT PHOTOS





Building 3 steel erection, building 5 progress



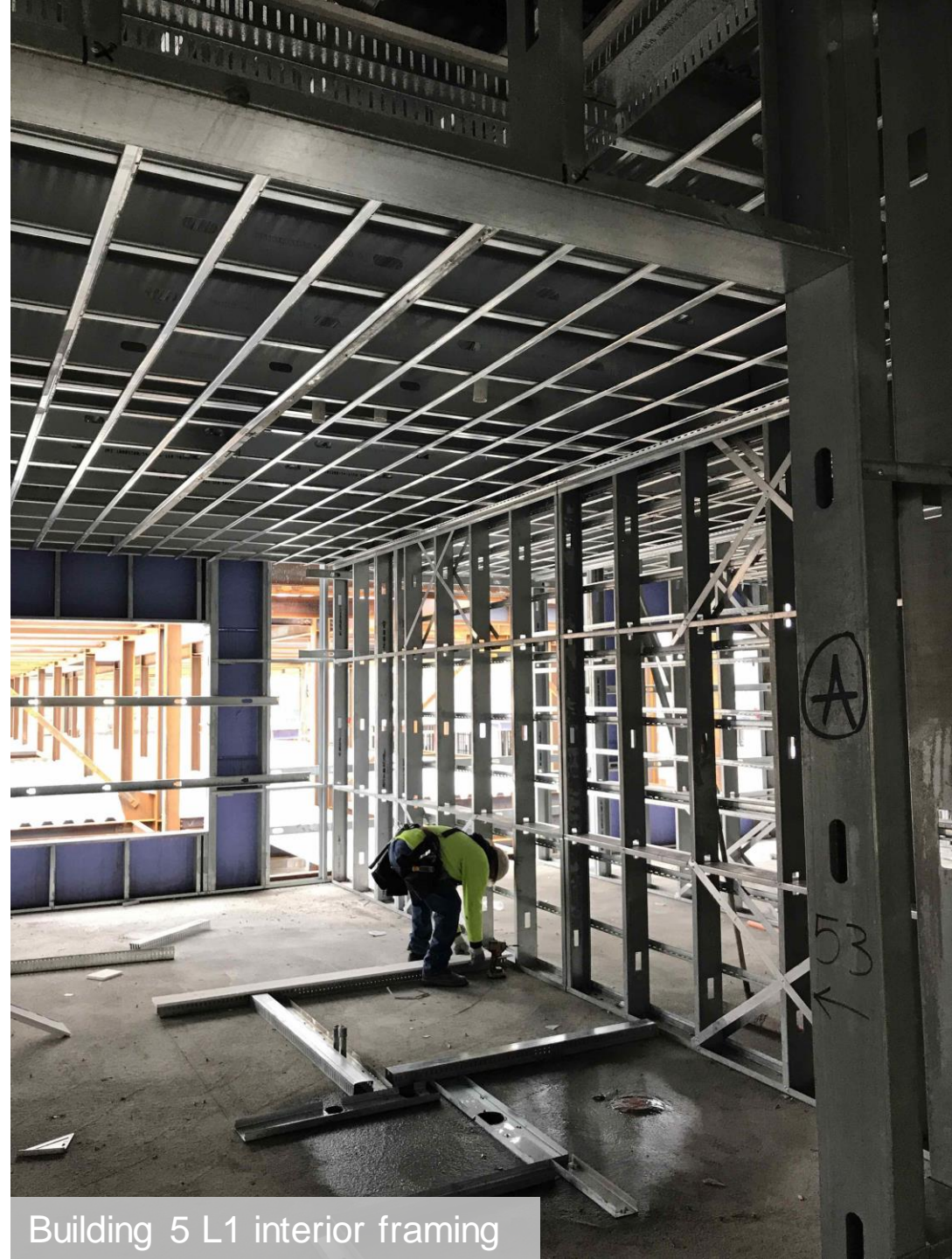
Building 4 L2 concrete pour in progress



Building 4 L2 concrete pour finished



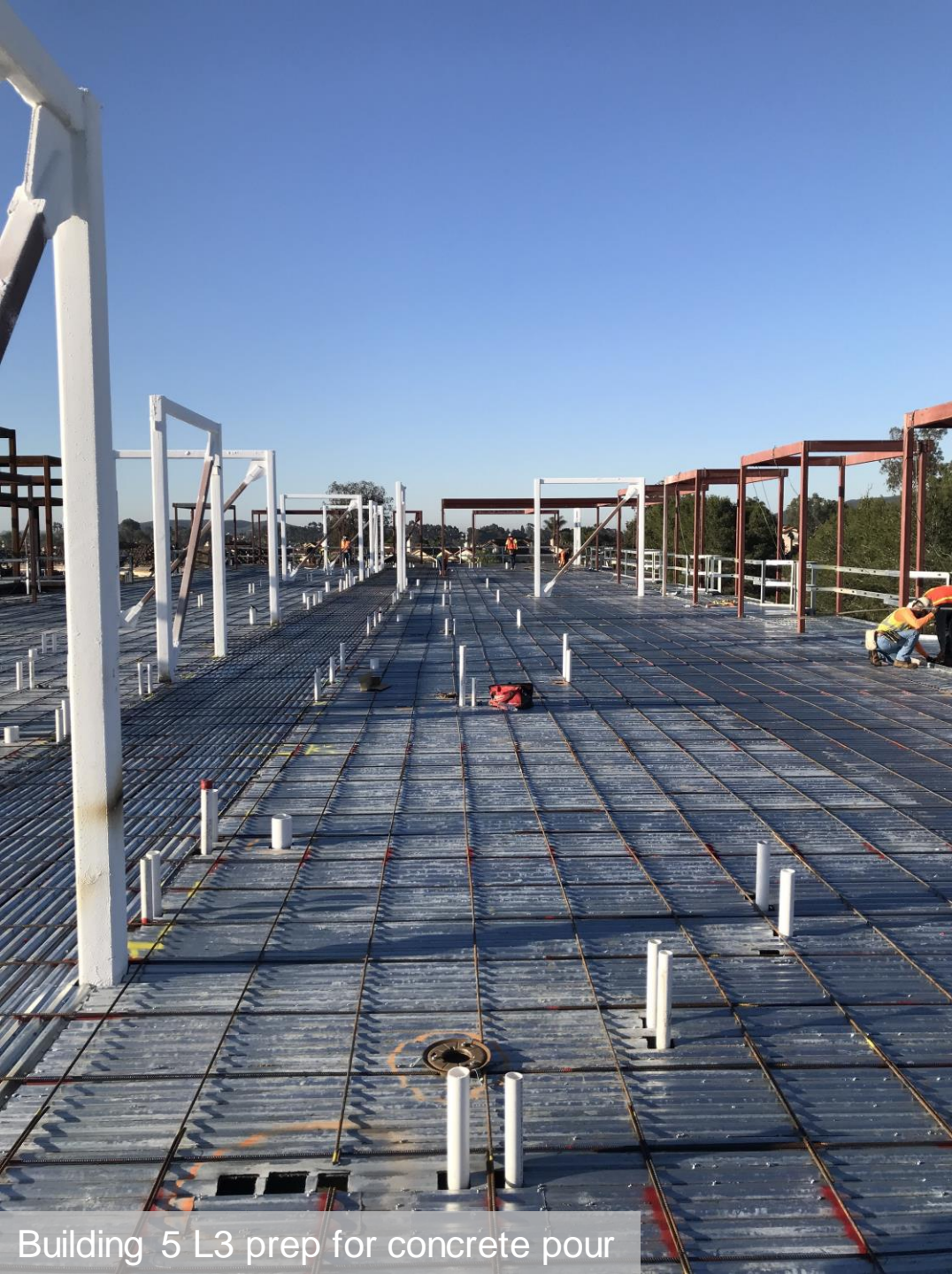
Tommy Sewell advising on building 6 L1



Building 5 L1 interior framing



Looking out from building 4 L3 to buildings 2, 5 and 6



Building 5 L3 prep for concrete pour



Building 6 L3 deck install



Building 10 framing progress



South end of site progress



E and SW cottages tile roof install



Cottage interior insulation and MEP rough-in



Cottage exterior window and lath install



Beautiful view of the hills from building 5 L3



UPCOMING HIGHLIGHTS

- Memory Care (Building 2)
 - Insulation and drywall start
 - Roofing start
 - Lath start
- Restaurant (Building 3)
 - Wall panel fabrication
- Clubhouse (Building 4)
 - L3 deck pour
 - Panelized wall installation
 - Fire proofing install
- West Apartments (Building 5)
 - L1 and L2 interior framing and MEP rough-in
 - L3 panelized wall framing
 - L3 concrete deck pour
- East Apartments (Building 6)
 - L1 & L2 interior framing and MEP rough-in complete
 - Structural system completion
- E Cottages (7D, 7E, 8C, 8D, 9B)
 - Drywall and installation start
 - Start building paper and lath
 - Stucco start
- SW Cottages (7B, 7C, 8B, 9A)
 - Insulation and drywall start
 - Lath start
 - Roof concrete tile installation
- W Cottages (7A, 8A)
 - Roofing start
 - MEP rough-in combo inspections
- Pool house (Building 10)
 - Wall framing and roof trusses
 - Roofing start



CONTACT INFORMATION

TEAM CONTACT:

Hans Muecke

Senior VP Operations Western US

(p) 858-812-7964

(c) 630-606-2503

Hans.Muecke@ryancompanies.com

Keith Pitts

Team Leader

(p) 858-812-7970

(c) 619-385-9587

Keith.Pitts@ryancompanies.com

Travis Ürig

Project Manager

(p) 858-812-7920

(c) 602-329-2044

Travis.Urig@ryancompanies.com

Heather Sullivan

Project Coordinator

(p) 858-812-7963

Heather.Sullivan@ryancompanies.com

Michael Beadle

Division Manager

(p) 858-812-7926

(c) 612-239-5547

Michael.Beadle@ryancompanies.com

Cody Vander Veen

Project Manager

(p) 858-812-7953

(c) 612-400-5121

Cody.VanderVeen@ryancompanies.com

Jerame Carlson

Project Engineer

(p) 858-812-7951

(c) 641-231-1208

Jerame.Carlson@ryancompanies.com

Luis Valdovinos

Project Engineer

(p) 619-318-9471

Luis.Valdovinos@ryancompanies.com

Nick Cap

Superintendent

(c) 602-513-3235

Nick.Cap@ryancompanies.com

Paul Stykel

Superintendent

(c) 619-385-1115

Paul.Stykel@ryancompanies.com

Tommy Sewell

Assistant Superintendent

(c) 619-380-1203

Tommy.Sewell@ryancompanies.com

Katerina Grengs

Virtual Design Coordinator

(p) 612-492-4713

(c) 651-472-1915

Katerina.Grengs@ryancompanies.com

Courtney Carr

Project Engineer Intern

(c) 612-532-7074

Courtney.Carr@ryancompanies.com