



PROJECT UPDATE

Silvergate Rancho Bernardo

San Diego, CA

January 2019

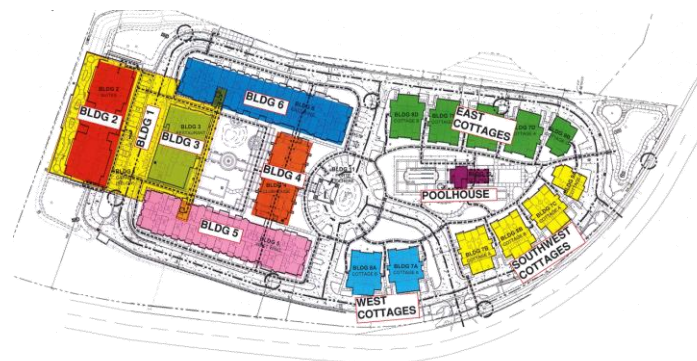
TABLE OF CONTENTS

- Current Highlights
- Safe Hours
- Fun Fact
- Project Photos
- Upcoming Highlights
- Ryan Companies Contact Information



CURRENT HIGHLIGHTS

- Memory Care (Building 2)
 - Roof Joists and roof decking completed
 - Roof trusses in progress
 - L1 interior framing and MEP rough-in in progress
- East Apartments (Building 6)
 - L1 framing interior walls in progress
 - L2 panelized walls completed
 - L2 ceiling joists in progress
- West Apartments (Building 5)
 - Intumescent paint application completed
 - L1 panelized walls in progress
- Clubhouse (Building 4)
 - Concrete foundation poured
 - Structural steel started
- E Cottages (7D, 7E, 8C, 8D, 9B)
 - Roofing dry-in and TPO roofing completed
 - MEP&F rough-in in progress
- SW Cottages (7B, 8B, 7C, 9A)
 - Roofing dry-in and TPO roofing completed
 - MEP&F rough-in in progress
- W Cottages (7A, 8A)
 - Concrete slab poured
- Poolhouse (Building 10)
 - Concrete slab poured





77,601

SAFETY HOURS TO DATE

Fun Fact: Our safe hours to date are equivalent to one person working full time for **37 years and 4 months!**

PROJECT PHOTOS





Building 4 - SOG rebar



Building 4 - Slab pour



Building 2 - L2 plumbing and fire protection piping



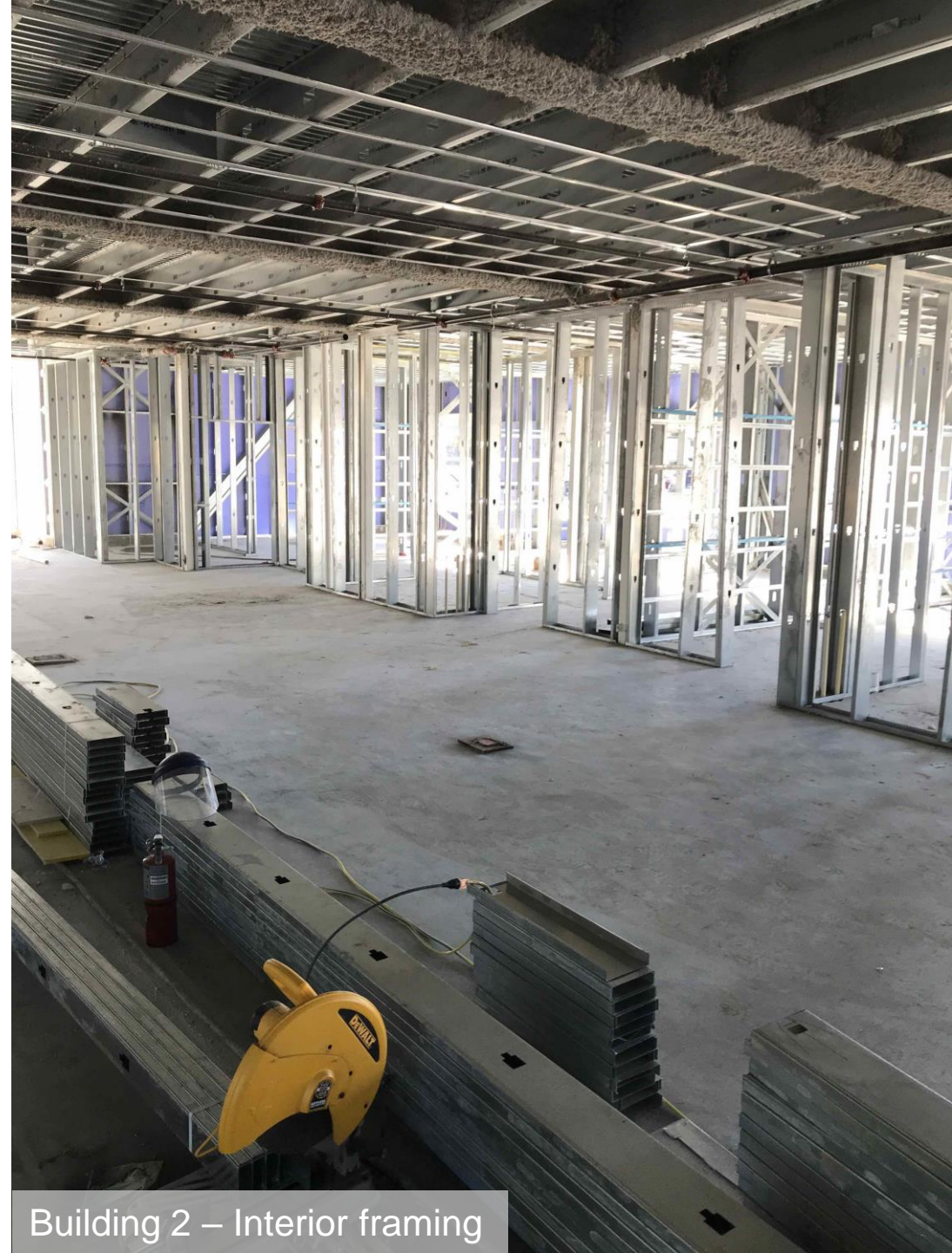
Building 2 - roof joists



Building 2 - Trusses in progress



Building 6 – L2 decking



Building 2 – Interior framing



Building 10 layout, SW Cottages roofing dry-in



E Cottages - TPO roofing install



Building 10 - SOG poured



W Cottages - SOG pour



Building 4 – Steel erection.. January 21st



Building 4 – Steel erection.. January 31st



Building 4 – Steel erection



Building 5 – Panelized wall installation



Building 5 – Panelized wall installation



SW Cottages – Pick-up framing



South end of site looking North



Lots of rain created muddy conditions



Building 6 progress, Building 4 steel erection



UPCOMING HIGHLIGHTS

- East Apartments (Building 6)
 - L1 and L2 interior framing and MEP&F rough-in
 - L3 concrete deck pour
 - L3 panelized wall framing and roof joists
- Memory Care (Building 2)
 - L1 and L2 MEP&F rough-in
 - Roof joists and metal deck completion
 - Roof MEP penetrations and Roofing start
- West Apartments (Building 5)
 - L1 panelized wall framing
 - L1 interior framing and MEP&F rough-in
 - L2 concrete deck pour
 - L2 panelized wall framing
- Clubhouse (Building 4)
 - Structural Steel Erection and metal deck installation
- E Cottages (7D, 7E, 8C, 8D, 9B)
 - MEP&F rough-in completion
 - Window and door installation
 - Roof concrete tile installation
- SW Cottages
 - MEP&F rough-in
 - Window installation
 - Roof concrete tile installation
- W Cottages
 - Wall framing and roof trusses
- Pool House (Building 10)
 - Wall framing and roof trusses



CONTACT INFORMATION

TEAM CONTACT:

Hans Muecke

Vice President of Construction

(p) 858-812-7964

(c) 630-606-2503

Hans.Muecke@ryancompanies.com

Keith Pitts

Senior Project Manager

(p) 858-812-7970

(c) 619-385-9587

Keith.Pitts@ryancompanies.com

Travis Ürig

Project Manager

(p) 858-812-7920

(c) 602-329-2044

Travis.Urig@ryancompanies.com

Heather Sullivan

Project Coordinator

(p) 858-812-7963

Heather.Sullivan@ryancompanies.com

Michael Beadle

Division Manager

(p) 858-812-7926

(c) 612-239-5547

Michael.Beadle@ryancompanies.com

Cody Vander Veen

Project Manager

(p) 858-812-7953

(c) 612-400-5121

Cody.VanderVeen@ryancompanies.com

Jerame Carlson

Project Engineer

(p) 858-812-7951

(c) 641-231-1208

Jerame.Carlson@ryancompanies.com

Luis Valdovinos

Project Engineer

(p) 619-318-9471

Luis.Valdovinos@ryancompanies.com

Nick Cap

Superintendent

(c) 602-513-3235

Nick.Cap@ryancompanies.com

Paul Stykel

Superintendent

(c) 619-385-1115

Paul.Stykel@ryancompanies.com

Tommy Sewell

Assistant Superintendent

(c) 619-380-1203

Tommy.Sewell@ryancompanies.com

Katerina Grengs

Virtual Design Coordinator

(p) 612-492-4713

(c) 651-472-1915

Katerina.Grengs@ryancompanies.com

Courtney Carr

Project Engineer Intern

(c) 612-532-7074

Courtney.Carr@ryancompanies.com