



# PROJECT UPDATE

Silvergate Rancho Bernardo

San Diego, CA

June 2019

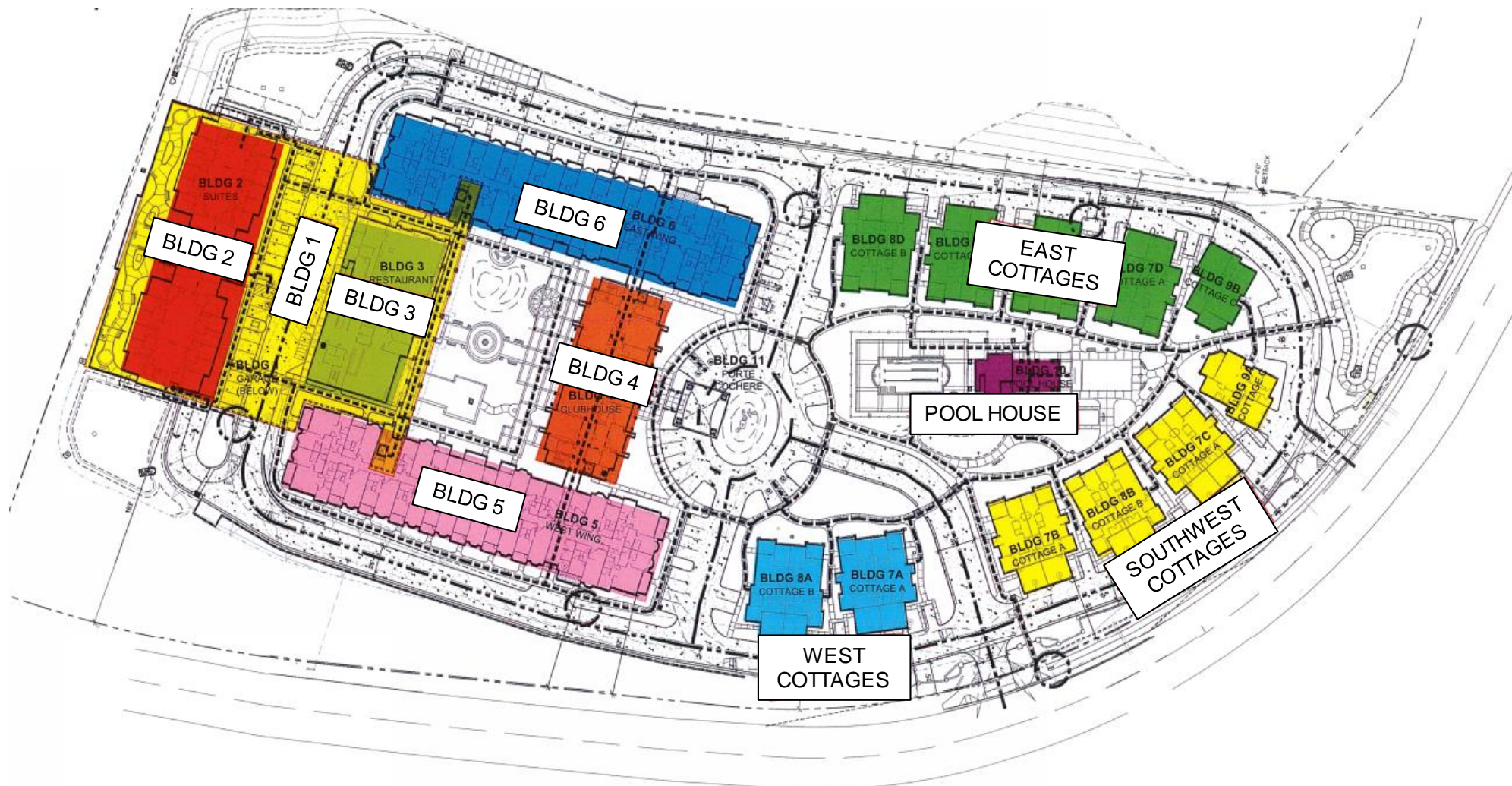


# TABLE OF CONTENTS

- Site Map
- Safe Hours
- Current Highlights
- Project Photos
- 360 Photos
- Current Site View
- Upcoming Highlights
- Fun Facts
- Ryan Companies Contact Information



# Site Plan/Building Legend



**170,041+**

**SAFETY HOURS  
TO DATE**





# CURRENT HIGHLIGHTS

- **Memory Care (Building 2)**
  - Completing weather barrier & starting stucco
  - Taping & soffit framing
  - Milestone - all wall drywall hung
- **Restaurant & Colonnade (Building 3)**
  - Continuing structural framing
  - Roof trusses in progress
- **Clubhouse (Building 4)**
  - All structural framing completed
  - Interior framing & MEP in progress
- **West Apartments (Building 5)**
  - Installing windows & doors
  - Framing & MEP rough inspections
  - Starting insulation
  - Roofing nearing completion
- **East Apartments (Building 6)**
  - Continuing insulation
  - Hanging drywall
  - Starting soffit framing
  - Roofing completed
- **Cottages (Buildings 7A-E; 8A-D; 9A,B)**
  - Drywall & taping continues
  - Door & frame installation continues
  - Painting continues
  - Installation of gas & grey water irrigation systems
- **Porte Cochere & Walkway**
  - Install trusses & roof sheathing
- **Pool House (Building 10)**
  - Weather barrier & stucco completed



# PROJECT PHOTOS

June 2018

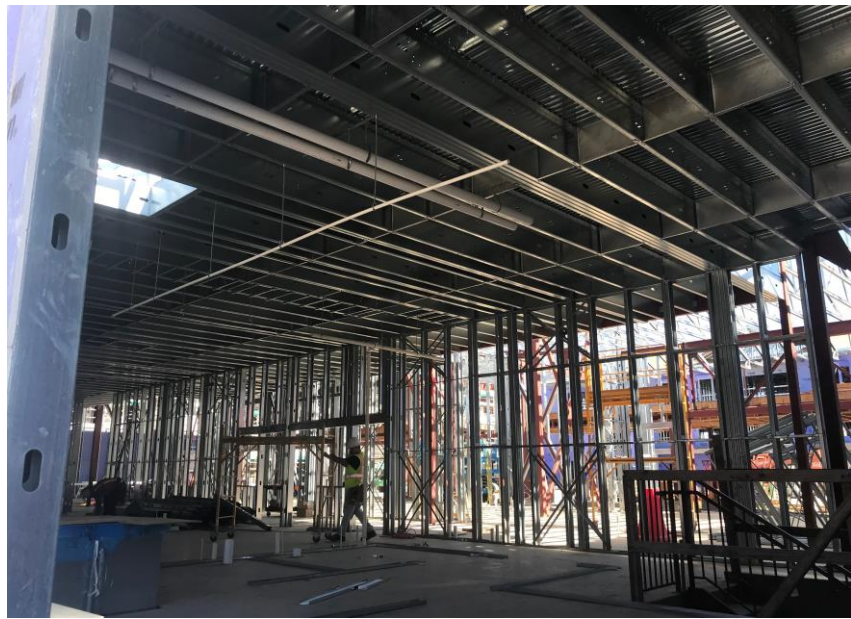






Building 2 - Memory Care





Building 3 - Restaurant







Building 4 - Clubhouse





Porte Cochere







Buildings 5 & 6 – West & East Apartments







Buildings 7A-E, 8A-D, 9A-B - Cottages







Building 10 – Pool House



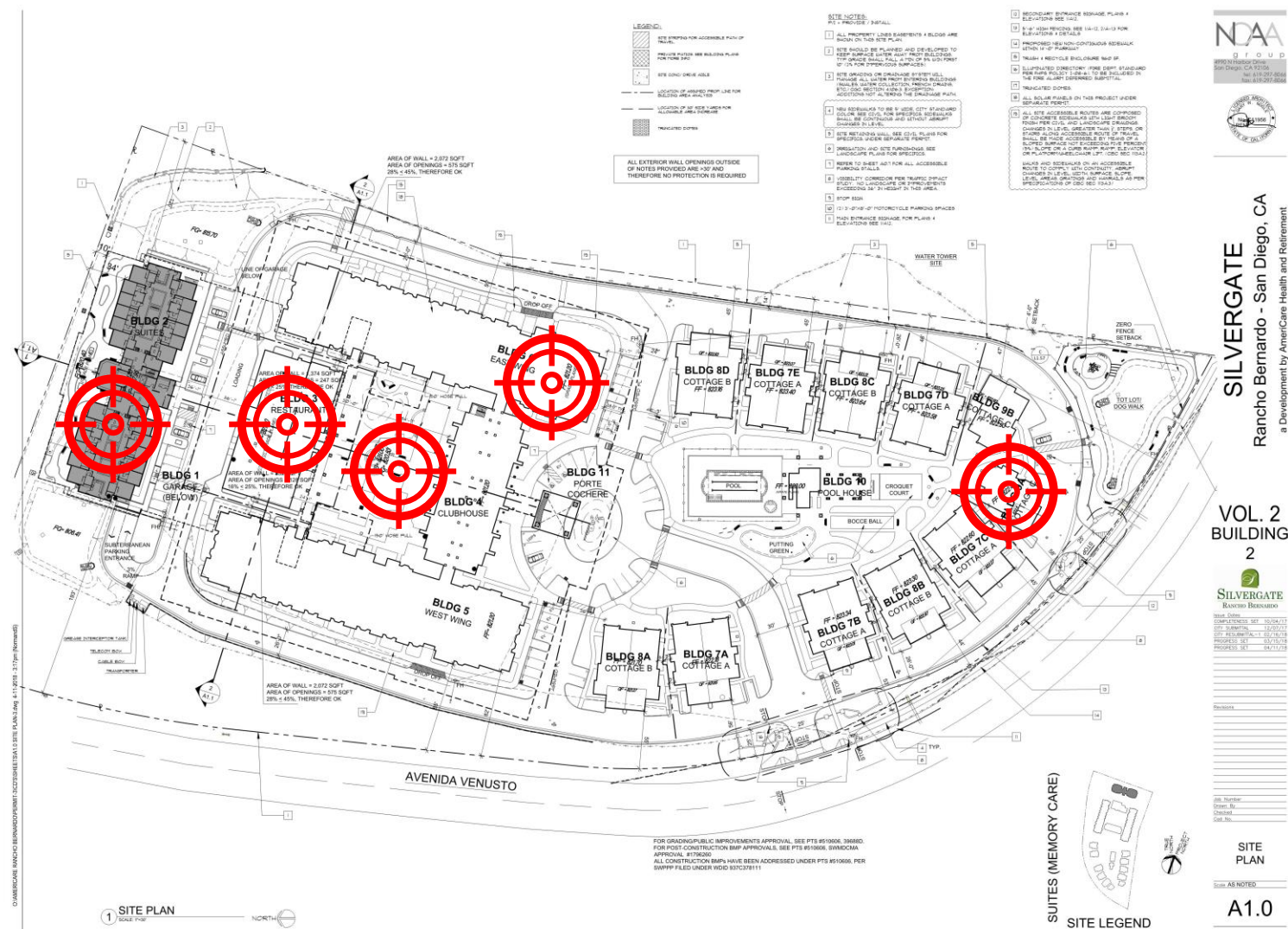




Click on the targets  
to view 360 degree  
images of the site.

The link will take you to your web browser to view the photo.

Then use your cursor  
to pan around the  
photo in any direction  
you like.







# UPCOMING HIGHLIGHTS

- **Memory Care (Building 2)**
  - Installation of elevator doors
  - Starting stucco on exterior
  - Installation of interior doors & trim
  - Start painting
- **Restaurant & Colonnade (Building 3)**
  - Interior framing & MEP rough in progress
- **Clubhouse (Building 4)**
  - Exterior framing completed
  - Continue interior framing & MEP rough
- **West Apartments (Building 5)**
  - Start stucco
  - Continue hanging drywall
- **East Apartments (Building 6)**
  - Start stucco
  - Installation of doors & windows completed
  - Finish hanging wall drywall
  - Starting ceiling framing
- **Cottages (Buildings 7A-E; 8A-D; 9A,B)**
  - Exterior on all cottages completed
  - MEP rough completed
  - Continue installation of interior finishes
- **Porte Cochere & Walkway**
  - Roofing completed
  - Starting soffit framing
- **Pool house (Building 10)**
  - Exterior in progress
  - Interior MEP rough completed





## Fun Facts

- 20,714 man hours clocked during the month of June
- Silvergate Rancho Bernardo is the third Silvergate retirement facility (owned by AmeriCare Health & Retirement, Inc)
- Silvergate Rancho Bernardo has the largest gray water system in all of San Diego County
- Rancho Bernardo is #8 of 89 on the list of best places to live in San Diego County





# CONTACT INFORMATION

## TEAM CONTACT

### **Hans Muecke**

#### **Senior VP Operations Western US**

(p) 858-812-7964

(c) 630-606-2503

Hans.Muecke@ryancompanies.com

### **Keith Pitts**

#### **Project Executive**

(p) 858-812-7970

(c) 619-385-9587

Keith.Pitts@ryancompanies.com

### **Nick Cap**

#### **Superintendent**

(c) 602-513-3235

Nick.Cap@ryancompanies.com

### **Heather Sullivan**

#### **Project Coordinator**

(p) 858-812-7963

Heather.Sullivan@ryancompanies.com

### **Michael Beadle**

#### **Director of Construction**

(p) 858-812-7926

(c) 612-239-5547

Michael.Beadle@ryancompanies.com

### **Cody Vander Veen**

#### **Project Manager**

(p) 858-812-7953

(c) 612-400-5121

Cody.VanderVeen@ryancompanies.com

### **Taylor Barton**

#### **Project Engineer**

(p) 607-425-0101

Taylor.Barton@ryancompanies.com

### **Ed Souza**

#### **Superintendent**

(c) 858-245-4874

Ed.Souza@ryancompanies.com

### **Niels Zwinkels**

#### **Field Coordinator**

(p) 858-812-7910

(c) 760-815-0615

Niels.Zwinkels@ryancompanies.com

### **Travis Urig**

#### **Project Manager**

(p) 858-812-7920

(c) 602-329-2044

Travis.Urig@ryancompanies.com

### **Paul Stykel**

#### **Superintendent**

(c) 619-385-1115

Paul.Stykel@ryancompanies.com

### **Tommy Sewell**

#### **Assistant Superintendent**

(c) 619-380-1203

Tommy.Sewell@ryancompanies.com

### **Katerina Grengs**

#### **Virtual Design Coordinator**

(p) 612-492-4713

(c) 651-472-1915

Katerina.Grengs@ryancompanies.com

### **Jerame Carlson**

#### **Project Engineer**

(p) 858-812-7951

(c) 641-231-1208

Jerame.Carlson@ryancompanies.com

### **Allie Shank**

#### **Project Engineer Intern**

(c) 209-303-6360

Allie.Shank@ryancompanies.com

### **Ahad Ali**

#### **Project Engineer Intern**

(c) 619-888-9153

Ahad.Ali@ryancompanies.com

